



South Hub Notices



Minister: Rev Katharine Bland - 01925 763218 - kjbland@yahoo.co.uk
Superintendent: Rev Wilfred Robinson - 01942 523896

Glazebury Methodist Church Warrington Road, Glazebury, Warrington, WA3 5LD
*"To welcome everyone with the Love of God; To be a guiding light in the community;
To provide a safe space where all can feel they belong"*
Church Contact: Delia Caswell - 01942 671938

Culcheth Methodist Church Ellesmere Road, Culcheth, Warrington, WA3 4BJ
Registered Charity Number 1129901
"Sharing God's love with our community by reaching out with open hearts"
Church Contact: Elizabeth Marr - 01925 762187

John 14: 1-4

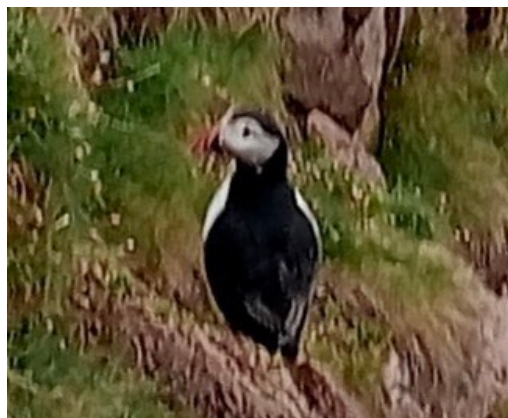
[Jesus said] "Do not let your hearts be troubled. Trust in God; trust also in me. In my Father's house there are many rooms; if it were not so, I would have told you. I am going there to prepare a place for you. And if I go and prepare a place for you, I will come back and take you with me that you also may be where I am. You know the way to the place where I am going."

Sharing Sunday Worship 10:30am

Sunday 3rd May - Reverend Wilfred Robinson - Holy Communion - JOINT SERVICE AT CULCHETH - No service at Glazebury - Steward David Ogilvy
Sunday 10th May - Local arrangement - Breakfast Church - JOINT SERVICE AT GLAZEBURY - No service at Culcheth - Steward Christine Taylor
Sunday 17th May - Local Arrangement - JOINT SERVICE AT GLAZEBURY - No service at Culcheth - Steward Delia Caswell *See notice below*
Sunday 25th May - Reverend Jenny Pathmarajah - JOINT SERVICE AT CULCHETH - No service at Glazebury - Steward Joyce McComb

Everyone is warmly welcomed to join us after the service for tea, coffee and fellowship

Thank you to everyone who has helped with the service this morning especially to Mary Gregson for the flowers. Next week's flowers at Glazebury will be provided by Ruth Waring.



Glazebury Men's Breakfast

Glazebury Men's Breakfast Group will meet this **Saturday 2nd May** when the speakers will be from The Rotary Club who have generously provided us with a grant towards the cost of the Grass Reinforcing Project to increase our available parking space at Glazebury. They will be talking about the work of the Rotary Club in the community. Because the talk is expected to be of wide interest, the meeting is open to everybody as was our Air Ambulance "Brew for the Crew" last year which was a great success. We look forward to welcoming everyone with a brew and bacon butty at 9.30am with the talk starting at around 10.00am. Look forward to seeing you there.

Alan Crozier

Coffee Shop at Culcheth

The Coffee Shop will be open as usual from 10.00am to 12.00noon this **Saturday 2nd May**. Do come along to enjoy a warm welcome and fellowship, a hot drink and a toasted tea cake or crumpet.

On Saturday 30th May I and several others will be at the Circuit Spiritual Weekend. It's a safeguarding requirement that a church member should be there who has done the Advanced Safeguarding Course and has a full DBS clearance. If anyone who fits the bill is available please contact Linda or me.

Thank you, David Ogilvy

Community Day Monday 4th May

We shall meet as usual for Monday Prayers and Coffee at 10.00am. The building will remain open until mid afternoon for access to toilets. For safety we shall need 2 people on duty from 12.00. If anyone can spare an hour please let me know asap.

Thank you, David Ogilvy

Service on 17th May

As announced in the last notices, Reverend John will not be leading our Hub worship at Glazebury on 17th May because he will be preaching elsewhere in the Circuit. The service will be a Local Arrangement led by Worship Leaders from both churches. They will be using the Easter Offering Service provided by Methodist Women in Britain. Envelopes for donations to the appeal will be available on the day and a plate for this offering will be passed around during the last hymn.

Peter Hemmings will hopefully preach at Culcheth in October.

Communication:

Weekly Notice Sheet: Joyce McComb by Wednesday 6pm for inclusion that week - email to culchethmethodist@gmail.com or phone 01925 767308

Website: www.leighandhindley.org.uk

Facebook: CulchethMethodistChurch; Glazebury Methodist church and LeighandHindleyMethodist

If you have a safeguarding concern please contact your church's Safeguarding Officer (Linda Bloomfield or Janet Rowlinson). If they are not available please contact the District Safeguarder Helen Bolton 07799 902 573.

Change of Meeting Point Programme

Meeting Point has restarted after the Easter break. We usually meet at 2.00pm on Thursdays. The Music group will continue to meet on alternate Thursdays to listen to mainly, but not exclusively, classical music.

Unfortunately Matthew Cooper, who was going to be speaking to us this **Thursday 7th May**, has had an accident which means he is unable to come to our meeting. Instead our meeting is entitled "One of my Favourite Books". Please bring along a book you have read and tell us why it is special to you.

The programme for the remainder of the session is as follows:

MAY	7th	See above	
	14th	Music Group	
	19th	(Tuesday)	3 Towns Operatic Society (See notice below)
	28th	Music Group	
JUNE	4th	Lisa Moorhouse	Speech Therapy
	11th	Music Group	
	18th	Jackie Mafie	I Am All talk
	25th	Music Group	
JULY	2nd	Philip Jeff	Robberies Register, 1909-1916 Margaret, Joyce and Betty

Three Towns Operatic Society - Yeoman of the Guard

As part of the Meeting Point programme, Joyce Daniels is booking tickets for the performance of the Yeoman of the Guard at St Joseph's Hall, Leigh on **Tuesday 19th May** when we have the benefit of a lower rate for senior citizens. Yeomen of the Guard is regarded as musically the most accomplished of the Gilbert & Sullivan operettas and has a strong, moving storyline. The 3 Towns always perform to a high standard so this will be a really great show.

Unfortunately several people have had to withdraw from this trip and it may not go ahead unless more people join us. If you are interested or know of someone who might be please let me know asap.
Thank you, David Ogilvy

Culcheth Methodist Choir

We're very pleased that the Choir will continue under the leadership of Margaret Jones, to whom we're extremely grateful for taking on this role. The Choir would like to take part in services regularly, something which the Joint Leadership will discuss.

You don't have to attend the Methodist Church to join us - we have members from other churches and none. We welcome new members, especially men, who choirs everywhere are short of. Please spread the word, and if you're interested, or know of someone who might be, please contact Margaret or myself. You don't have to commit, just come along to Culcheth Methodist Church at 7.30pm on a Wednesday and try it out. David Ogilvy

Circuit Spiritual Weekend 2026

Following the positive feedback from last year's event, the Circuit will once again be hosting a Spiritual Weekend. This will take place from **Friday 29th May to Sunday 31st May** across the Leigh and Hindley Circuit, and this year will be led by Reverend Alan Bradley, Deputy Chair of the North West England District and Mission Area Lead for Greater Manchester Plus Region. The booking form is now available on the Circuit website: <https://www.leighandhindley.org.uk/spiritualweekend2026.html> Invitations to attend the Weekend will be available to pick up at Culcheth and Glazebury Churches. For those who don't wish to book online, there will be a sign-up list on both notice boards (please sign-up only once!). Please make sure you don't miss this great occasion by signing up now if you haven't already done so. The Circuit Leadership would like to have final numbers by this Sunday (3rd May). This is positively your **last chance** to sign up

Event at Hindley Green Methodist Church

On **Saturday 16th May** at 12.30pm Hindley Green Methodist Church (WN2 4XW) are hosting a lunch with the Wigan Ukulele Band. For more information contact Betty on 01942 877678.

Churches Together Pentecost Service

There will be a Churches Together Pentecost Service on **Sunday 24th May** at Newchurch Parish Hall starting at 4.00pm with refreshments afterwards. Please see the notice below.
All are welcome. David Ogilvy

Café Praise and Worship

The next Cafe Praise and Worship will be **Sunday 7th June** at Newchurch Parish Hall, Common Lane, Culcheth. Doors open at 6.15pm with running refreshments. Service starts at 6.30pm. There is no service in May. Roddy Marr

Church Community Garden – New Arch

The observant amongst you may have spotted a new addition to the Church Garden. The previous arch, which we were generously given a few years ago and has served us well, was sadly completely destroyed by the strong winds a few weeks ago. It has taken a while to find a replacement wide enough to straddle the path, which was built in line with recommendations for wheelchair use, but it is now in situ and we hope it won't be too long before it is attractively adorned with mature blooms!

We would particularly like to thank those individuals, as well as grant providers, who have donated the money over the years which has enabled us to make such purchases to enhance the garden for everyone's enjoyment. That generosity is very much appreciated, as are all donations of plants etc. **THANK YOU SO MUCH!**

Ashley, Janette and Heather



Atherton & Leigh
Foodbank
Together with Trussell

Items we are short of right

Tinned ready made custard

Pasta sauce

Biscuits (all kinds)

Washing powder

Tinned meat

Tinned veg

Rice pudding

Tinned fruit

Instant noodles

Size 5 and size 6 nappies

3rd May, 2026



CHURCHES TOGETHER IN CULCHETH,
CROFT, GLAZEBURY AND WINWICK

PENTECOST SERVICE

**NEWCHURCH
PARISH HALL
NEXT TO SAINSBURY 'S**

SUNDAY 24TH MAY

4PM START

**TEA, COFFEE, CAKE SERVED
AFTER THE SERVICE**

ALL ARE WELCOME