

# GLAZEBURY METHODIST CHURCH

**Minister:** Rev Katharine Bland Tel: 01925 763218  
**Superintendent:** Rev Wilfred Robinson Tel: 01942 523896  
**Church Contact:** Delia Caswell Tel: 01942 671938  
**Circuit Website** — [www.leighandhindley.org.uk](http://www.leighandhindley.org.uk)



**REV KATHARINE BLAND**

**SAD NEWS** –Most of you will know by now, that sadly, Pat Turner passed away on Sunday, 30 January in Warrington Hospital. Pat was a regular worshipper at church. Our thoughts, prayers and condolences go to Paul, Pat's husband, and all her family. Pat's funeral will be at 3pm at Howe Bridge Crematorium on Wednesday, 16 February 2022. Here is the link to watch the service at Howe Bridge –

<https://watch.obitus.com>

Userword - limo1764

Password – 073625

**3.45pm - at chapel for a service of thanksgiving. Tea, coffee and cake will be served after the service of thanksgiving at chapel.**

+++++

**READINGS FOR SUNDAY, 13 FEBRUARY 2022 – Jeremiah 17: 5-20; Psalm 1; 1 Corinthians 15: 12-20 and Luke 6; 17-26**

**EXTRACT FROM 1 CORINTHIANS 15 – 'The Resurrection of Christ' –Now, brothers, I want to remind you, which you received and on which you have taken your stand. By this gospel you are saved, if you hold firmly to the word I preached to you. Otherwise, you have believed in vain. For what I received I passed on to you as of first importance: that Christ died for our sins according to the Scriptures, and that he appeared to Peter, and then to the Twelve.....**

+++++

**THIS IS A VERY IMPORTANT DATE IN THE FUTURE OF THE LEIGH AND HINDLEY CIRCUIT (YOUR CIRCUIT) AND GLAZEBURY METHODIST CHURCH – Can as many people as possible attend this event at Bedford Methodist Church. It is really important we have our say. We need your views. You do not have to hold a role within the church to attend.**

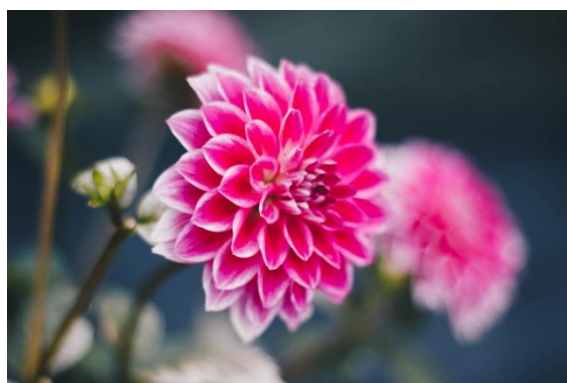
Following on from the Circuit Vision Day in October, the following prayer points were identified.

**The Circuit Vision: Implementation Day** will be taking place on **Saturday, 19 February 9 .30am — 12.30pm at Bedford Methodist Church**. Ahead of this we ask that you keep these seven points in your prayers. Each church will be given further information in organising opportunities for prayer ahead of the Implementation Day.

1. For the Circuit to identify as a team and to work more closely together.
2. To explore opportunities to share people and resources more closely.
3. To improve communication across the Circuit and between churches.
4. To provide pastoral support for our congregations and our staff.
5. To encourage opportunities to work closely with children and young people and our schools.
6. To explore opportunities to support our local communities.
7. To develop opportunities to support outreach work, including 'New People, New Place

*[Andrea (Circuit Office)]*

+++++



**THANK YOU FOR THE FLOWERS IN CHURCH THIS WEEK PROVIDED BY RUTH WAREING**

+++++

**A PRAYER ....**

Lord, every time the tide is high and the gales blow in, we remember you stilled the storm. Bless those surrounded by the sea, with their lives dictated by tides, their goods and produce dependent on ships finding safe harbour. Every time the tractor ploughs the field and the picker gathers the crop, we remember you sow seeds of life. Bless those surrounded by agriculture, with their lives dictated by the seasons, their goods and produce dependent on the weather and the land. Every time we see a plane in flight and turn our heads to the sky, we remember you made us your children. Bless those who fly, with their lives dictated by the winds and fog, our goods and produce flying through the heavens to find their way to our homes. Amen.

**[Dawn Saunders, Channel Islands District Chair]**

+++++

## CHURCH SERVICES

Date	Preacher	Virtual (V) or Physical (P)	If you can't attend church – join online by this link
			<b>Online:</b> click this link to join the meeting via <b>Zoom</b> . <a href="#">Sunday Service Zoom Link</a>  <b>On the Phone:</b> Dial <b>0330 088 5830</b> on your telephone, When it asks for the access code, enter <b>935 8460 6158#</b> . When it asks for your ID, press <b>#</b> .
<b>2022</b>			
13/2/22	Breakfast Church/Local Arrangement	V	<b>Steward</b> – Christine Taylor
20/2/22	Live Stream/Local Arrangement	V	<b>Steward</b> – Graham Borg
27/2/22	Rev Wilfred Robinson (HC)	P	<b>Steward</b> – Delia Caswell

+++++



## COFFEE MORNINGS

**COFFEE MORNINGS** – will be held the second Tuesday of every month 10-12noon. NEXT COFFEE MORNING – TUESDAY, 8 MARCH.

+++++

Rev Wilfred Robinson and Reverend Katharine Bland will be leading the **Circuit Lent Course** on Thursdays March 3rd, 10th, 17th, 24th, 31st and April 7th at Bedford Methodist Church 7.30pm. All welcome. This course will also take place on Zoom – details to follow. [Andrea, Circuit Office]

+++++

### **DATES FOR YOUR DIARY:-**

**Church Council Meeting – Thursday, 24 February 2022 – 7.30pm – please try and attend.**

**Circuit Meeting to be held on Thursday, 17 February 2022. Delia Caswell (for congregation) and Janet Crozier (for Stewards) to attend.**

**World Day of Prayer – Friday, 4 March 2022 - 7pm at Newchurch Parish Church – Rupert Reece will take the service.**

***Pastoral Meeting-Wednesday, 9 March 2022 – (via Zoom or at Church?)***

***NEW DATE – An Auction will be held to raise funds for chapel on Saturday, 19 March 2022 – more details to follow.***

***Harvest Festival – 2 October –hopefully at the allotment as last year.***

+++++

**Heating Update:-** Please be aware that we still have some issues with the heating at the rear of the building, mainly affecting the church hall.

During the first lockdown the gas central heating system in effect dried up, broke down and caused damage without us noticing. We have not needed to tell you this to date as this was fixed with love (avoiding considerable expense £000's) by our own qualified heating engineer - Peter. Only when it came to officially reopen and there was a need for heating, it became apparent that the Nest system which allows us to remotely operate the thermostat / timer / etc. was not working correctly. This issue has been resolved in recent weeks. However, it has now come to light that the heating system is not now operating all the radiators. This has been investigated a few times over the last few weeks. We thought that the issues were resolved after a visit last Friday. However, on Sunday the system had reverted to not all of the radiators working. Since then the system has been reviewed again and are now having to dig deeper into the issue to try and resolve as soon as possible.

**Drains Update:-** You will be aware that there has not been any movement recently on the position with the drainage from the kitchen.

This is because the volunteers who have been trying to resolve the issue in the most economically advantageous way have been busy working and also the ground has been too waterlogged.

When the initial trial hole was dug out the church insurance company visited the site and said that there was never a proper drain in place so would not be able to fix at their expense. At that point we looked and planned to install a soakaway drain with fat traps. To do this we needed to dig a deeper hole. This was done and during this digging we found a deeper drain which was running away from the building. We then engaged a drain company from the village who carried out a survey and followed the drain until a blockage was met approximately 2/3 metres further from the building in the direction of the car park. It is likely that root damage from the trees had aided the drain block in some way. We were advised to dig a couple more deeper holes to see if this was the case. To date this has not been done.

In October we just so happened to have someone giving a talk at Men's Breakfast who just so happened to be a water diviner. He was able to follow the same drain across the car park to the trees alongside Warrington Road.

In November we were able to speak to United Utilities unofficially who checked their maps to see if there was a drain in the same place. Unfortunately, they have no records of this, but they have no records of any drains coming from the church which is not true as our main drain is on the other side of the church building coming from the toilets. They did say that as the drain would be likely Victorian it may not show on their records anyway.

So, what we need to do now is to dig a couple of deep holes on either side of the car park at our expense to see if there are the remains of a drain. If there is, we will get back to the Insurance Company to see if they can pay for fixing and re-instatement or we will have to

revert to either having a new pipe laid from the building to the main road at considerable expense to ourselves or installation of a soakaway which will not cost as much.

Please continue to bear with us and we'll let you know of updates as soon as we are made aware.

Thanks

Robert Graham (on behalf of the Church Leadership Team)

+++++

**Please CONTINUE TO REMEMBER THE FOLLOWING in your prayers:-**

- **Pat Turner - who has recently passed away. For her husband, Paul, and all Pat's family and friends. Also, Aaron and Joan Heywood (Pat's brother and sister-in-law)**
- **Eileen Groves – who has recently had a fall.**

**Those, for one reason or another, feel that they are not ready to return to church. May your blessings be always with them. For any of our friends and relatives who are finding these times difficult. May your presence be with them.**

+++++

**THE LEADERSHIP TEAM MEETS ON A REGULAR BASIS. IF YOU HAVE ANY QUERIES/QUESTIONS PLEASE LET ME KNOW WHAT THEY ARE AND I WILL TAKE THEM TO THE MEETING – IT DOESN'T MATTER WHAT THE QUESTION/CONCERN MIGHT BE. WE CANNOT WORK FOR YOU IF YOU DON'T TELL US WHAT YOU MAY BE CONCERNED ABOUT!!!**

*[Christine Taylor]*

+++++

### **Room / Event Bookings**

With immediate effect please direct all room / event booking enquiries to Robert Graham via one of the following methods: DM via the Glazebury Methodist Church Facebook page  
By email: [Robert.graham5@sky.com](mailto:Robert.graham5@sky.com) By Phone or text: 07806 600508

+++++



For the most up to date news see our Facebook page.  
Search 'Glazebury Methodist Church' on Facebook.

**IF YOU WOULD LIKE TO CONTRIBUTE TO YOUR NEWS SHEET PLEASE CONTACT ME -  
CHRISTINE TAYOR –ON 07801252625 OR [christine4872@sky.com](mailto:christine4872@sky.com)**

