

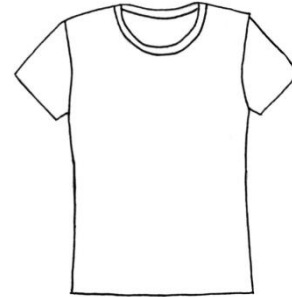


Culcheth Methodist Church

Transforming the World by meeting the needs of our community as God's people

Ellesmere Rd, Culcheth, Warrington WA3 4BJ
Reg Charity No. 1129901

Minister: Rev Andrew Bradley is on Sabbatical.
Rev'd Vivienne Smith 01942 665654
vivgsmith@aol.com



Church Contact: Elizabeth Marr 01925 762187

Welcome to our Church, it is lovely to have you with us.

If you are new to the church, please say hello, either to the welcome team in the foyer, or to anyone you see. If you would rather sit quietly, that's fine too.

On the 3rd Sunday of each month, Junior Church goes to Glazebury for Breakfast Worship at 9am.

Everyone is warmly welcomed to join us after the morning service, for refreshments, conversation & fellowship in the hall, or in the foyer after the evening service, follow the crowd.

Sun	24-Feb	9.45am Morning Worship – Own Arrangement Fairtrade stall after the service 6.30pm Evening Service – Rev Viv Smith (with Holy Communion) 7.30pm Explore **Newsletter Deadline Day – see over
Mon	25-Feb	9.30am-10 Open Prayer time 10am-12.30 Open Doors in the Foyer
Tue	26-Feb	Tuesday Tots
Wed	27-Feb	8-9.30pm Choir
Thu	28-Feb	2pm Home Group @ The Bushby's 7-9pm Hearts & Hands
Fri	1-Mar	
Sat	2-Mar	10am-12noon Open Doors Lenten Retreat Day at Glazebury – see over
Sun	3-Mar	9.45am Morning Worship – Mr Phillip Kennedy 6.30pm Evening Service – Rev Viv Smith Flowers – Joyce McComb

Thanks to Margaret Scott for the flowers, the preacher, worship leaders, readers, musicians, stewards, AV support and the refreshment providers.

Luke 6:27-38

Do not judge, and you will not be judged. Do not condemn, and you will not be condemned. Forgive, and you will be forgiven

Communication:

Weekly Notice Sheet: To Amy by Wed 6pm for inclusion this week, Tel 766550, culchethmethodist@gmail.com

Website: www.leighandhindley.org.uk Facebook: LeighAndHindleyMethodist contact Rev'd Bradley with content

Room Bookings: Linda Bloomfield, lindajbloomfield@yahoo.co.uk 01925 765875

Magazine entries to cmcnews57@gmail.com.

Prayer Circle requests contact Janette Hutchinson:766819/07729 313466 or Jane Bushby:509558/07949 390862

Upcoming Events & Notices

Church Council Meeting

We had a very good church council meeting last week. The finished "Well Project Q&A" booklet is available in the foyer. Do take a copy and pass one on or let us know if you think we should deliver one to someone. There will also be a survey about the foyer to help us furnish the foyer most appropriately – do fill it in.

Lenten Retreat – Into the Wilderness

Sat 2nd Mar 9.30 – 3.30, led by Donna Worthington. A Lenten retreat with prayer, quietness, presentation, imagery and space to listen. Soup & roll provided. To book your place, contact Delia Caswell 01942 671938 before 20th Feb. Places Limited.

Lent Course

A 7 week "Spiritual Practices" course will be held during Lent. There are two options – Wednesday or Saturday mornings, both at 10.15am led by David O (Wed) and Alex Laing (Sat). The material has been developed by Inspire & The Methodist Church and the course is open to anyone. Do join us!

Frugal Lunches

A Frugal Lunch will be served at Newchurch Parish Hall for charity, each Friday during Lent. From 8th March to Good Friday on 19th April, 12noon to 1.30pm

Drama for Easter – "The Vigil"

Churches Together are planning a production of "The Vigil" which explores the mystery of the disappearance of Jesus' body from the tomb through the trial of the gardener. Several people from this church, Glazebury and Newchurch have already expressed interest. The parts will be read so you don't need to learn lines. It will be performed in Newchurch Parish Hall on the afternoon of Easter Saturday, 20th April. Speak to David O if you are interested in taking part.

Prayer Shawl Ministry

The Hearts & Hands group have embarked on a new project which will involve creating prayer shawls, wraps, blankets & scarves to be given to those who need comfort or to commemorate

special occasions. We would welcome your contributions to this project in many ways: creating the items, providing wool, praying blessings over the project and items created, packaging the items or making cards to accompany them (we expect other avenues to develop too). For info, please contact Caroline Fillery, Janette Hutchinson or Viv Briney.

Rev Andrew's Sabbatical

Andrew will be taking his Sabbatical from 22nd Feb to 22nd May. During this time, Rev Viv Smith will have oversight of our church. Pastoral matters will be looked after by Viv Briney, Janette Hutchinson and Jane Bushby. Caroline Fillery is part of Andrew's support team. See separate letter for more information.

Church Community Garden

We hope that you have all seen the suggestion for creating a garden and seating area outside the church. Thank you to everyone who has already made comments or suggestions. If you would like to add your own thoughts please speak to us or members of the Church Council, or put your ideas in the folder pinned to the noticeboard in the foyer, as your opinion is important to us. Thank you! Janette and Ashley Hutchinson

Magazine Articles

Nina and I are very pleased that the new bimonthly mag is being well received. One drawback to issuing it every two months is, that many items of interest are not getting to us in time! The last edition missed out on mentioning two or three events of interest because of this. The next edition will be called 'March – April' so we need everyone to think ahead to what is happening in March, April and May. Our deadline will be Sunday 24th Feb So, I make a plea, to all you 'event planners and organisers' to send us details in good time. Not forgetting a big Thank You to those responsible for already sending me something about events in May and July! Thanks, Chris Pathmarajah